

# Attention! Your Streets Will Be Closing

Monday, July 20<sup>th</sup> (RED SECTION)  
Tuesday, July 21<sup>st</sup> (BLUE SECTION)  
Wednesday, July 22<sup>nd</sup> (AQUA SECTION)  
Thursday, July 23<sup>rd</sup> (YELLOW SECTION)  
Friday, July 24<sup>th</sup> (PINK SECTION)  
Monday, July 27<sup>th</sup> (GREEN SECTION)  
Tuesday, July 28<sup>th</sup> (PURPLE SECTION)  
Wednesday, July 29<sup>th</sup> (WHITE SECTION)  
Thursday, July 30<sup>th</sup> (NEON SECTION)  
Friday, July 31<sup>st</sup> (ORANGE SECTION)



During the closure, the streets will not be available for travel or parking whatsoever. If you need to use your vehicle during the closure, **please plan ahead** by parking your vehicle outside of the area designated as closed.

**\*\*See other side for the map of street closures\*\***

## WHY IS MY STREET CLOSING?

The streets in your community are having a pavement preservation treatment installed that helps significantly extend the life of asphalt streets. The benefits of properly maintained streets include higher property values, a smoother/safer ride, and reduced costs to the community by prolonging the need for replacement.

## WHAT IF MY CAR IS PARKED ON A SECTION THAT IS CLOSED?

Work will commence at **7:00 AM**, and the streets being treated will be closed until **7:00 AM** the following morning. All vehicles must be removed from the street prior to 7AM in the area being worked on that day. A tow truck will be called for any cars parked on the streets scheduled to be treated that day. Towing expenses will be the owner's responsibility.

**\*\*Contact your property/community management company for information on towed vehicles.\*\***

## WHAT IF I DRIVE ON THE STREET WHILE CLOSED?

You will be liable for damage to your vehicle and to repair the area you have driven on. Minimum repair cost is \$600, up to \$3,500, to repair the installed surface treatment. In the event of a life-threatening emergency, emergency vehicles will not be stopped from driving on the treated surface.

## CAN I WALK ON THE STREET DURING THE CLOSURE?

Our product, HA5, can be walked on once it dries to a matte/chalkboard finish, usually within a few hours or so of the application. We apply two coats of the HA5 throughout the day, so there will be two waiting periods that the street cannot be walked on.

## WILL MY TRASH/RECYCLE GET PICKED UP?

If we are working on your street on your normally scheduled trash/recycle day, please put your bins out the night before. The garbage company will be informed and will pick up before the 7AM closure.

## ALL OUTSIDE WATER MUST BE TURNED OFF

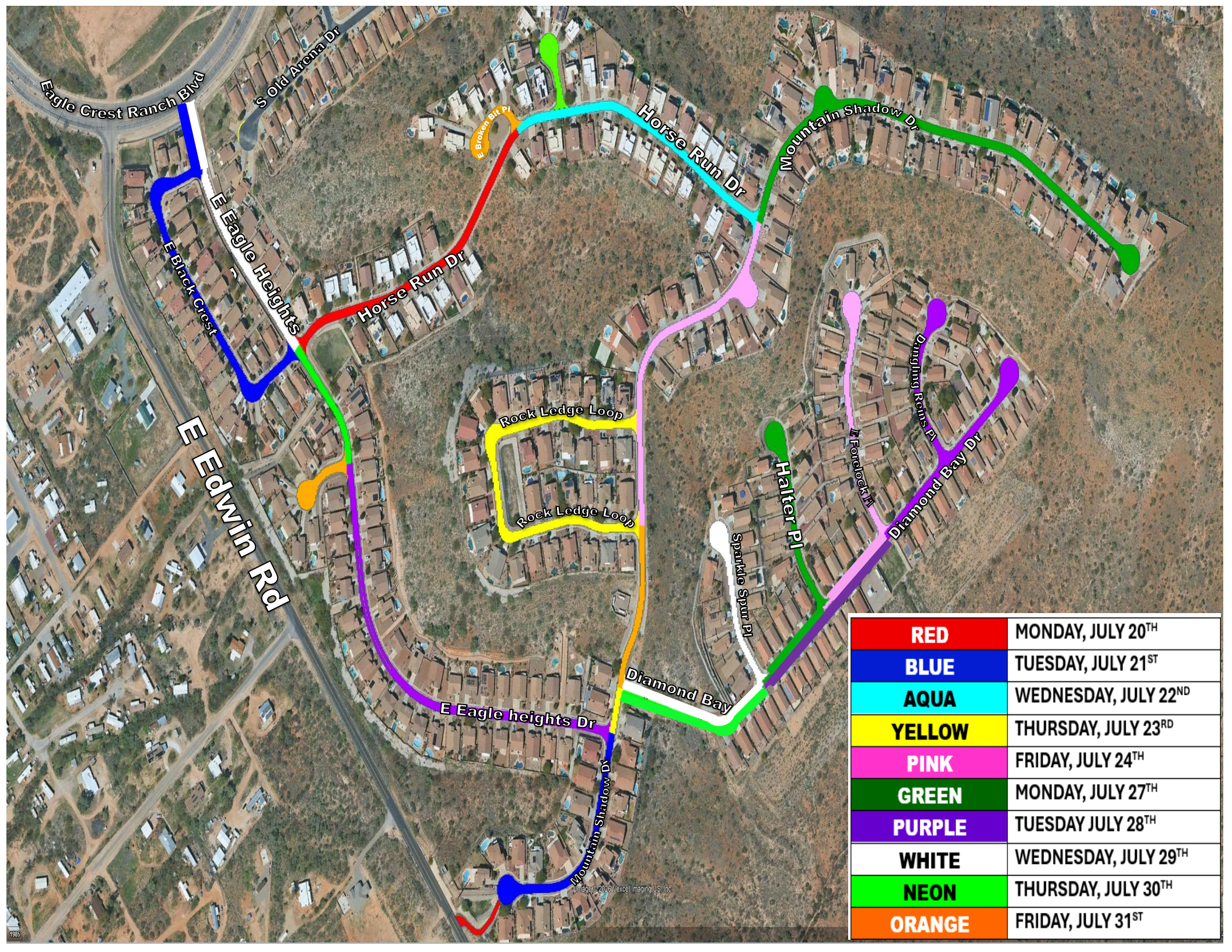
Water may damage the installation of the surface treatment. Please do not have sprinklers, hoses, etc. set to come on 24 hours before the street closure, during the street closure, or 24 hours after the street closure. Damage due to outdoor water use will result in the same repair cost of \$600 minimum, up to \$3,500, to repair the installed surface treatment.

## WEATHER CANCELLATION PROCEDURES:

If your street is canceled due to weather, **ONLY THAT DAY** will be rescheduled. All other days will proceed as scheduled. You will receive a new notification of the rescheduled date.

Holbrook Asphalt  
(602) 307-0425 Ext 122





<b>RED</b>	MONDAY, JULY 20 <sup>TH</sup>
<b>BLUE</b>	TUESDAY, JULY 21 <sup>ST</sup>
<b>AQUA</b>	WEDNESDAY, JULY 22 <sup>ND</sup>
<b>YELLOW</b>	THURSDAY, JULY 23 <sup>RD</sup>
<b>PINK</b>	FRIDAY, JULY 24 <sup>TH</sup>
<b>GREEN</b>	MONDAY, JULY 27 <sup>TH</sup>
<b>PURPLE</b>	TUESDAY JULY 28 <sup>TH</sup>
<b>WHITE</b>	WEDNESDAY, JULY 29 <sup>TH</sup>
<b>NEON</b>	THURSDAY, JULY 30 <sup>TH</sup>
<b>ORANGE</b>	FRIDAY, JULY 31 <sup>ST</sup>